



**East Carolina University | Board of Trustees
Finance & Facilities Committee Meeting
April 27, 2017 | Agenda**

I. Minutes

- A. Approval of February 16, 2017 Minutes Action

II. Action and Information Items

- A. Approval to lease the Firetower Clinic for ECUP Action
- B. Dowdy Ficklen Stadium Southside Renovation Elevations Action
- C. Greene Residence Hall Renovation Elevations Action
- D. Campus Safety Update Information
- E. Capital Projects Update Information
- F. Designer Selections since the last Board meeting Information
- G. Life Science and Biotechnology Building Update Information
- H. Annual Report on Related Persons Information
- I. Salary Increase Report Information
- J. Other Information

East Carolina University
Board of Trustees
Finance and Facilities Committee
April 27, 2017

Session	Finance and Facilities Committee
Responsible Person	Vice Chancellor for Administration and Finance Frederick Niswander
Agenda Item	I.A.
Item Description	Minutes of February 16, 2017 Meeting
Comments	N/A
Action Requested	Committee Approval
Disposition	
Notes	

East Carolina University | Board of Trustees

Finance & Facilities | Harvey Hall | February 16, 2017

Minutes

The Finance & Facilities Committee of the ECU Board of Trustees met in regular session on February 16, 2017 at 3:00 pm in Harvey Hall within the Murphy Center of East Carolina University. Committee members present included Bob Plybon, Leigh Fanning, Max Joyner, and Danny Scott. Terry Yeargan was absent.

I. MINUTES

Bob Plybon asked the Committee to approve the minutes from November 10, 2016. Max Joyner made motion and Danny Scott seconded and the minutes were approved.

II. ACTION AND INFORMATION ITEMS

- A. The Committee reviewed a request to purchase six properties in the area of Forbes and 9th Street. Scott Buck, Associate Vice Chancellor for Business Services. The Committee approved a motion to recommend that the full Board approve the purchase.
- B. The Committee reviewed a request to grant approval for a Fiber Optic Easement. Scott Buck, Associate Vice Chancellor for Business Services, was available for questions. The Committee approved a motion to recommend that the full Board approve the easement.
- C. The Committee reviewed a request to grant approval for Permanent and Temporary Drainage, Utility, and Construction Easements. Scott Buck, Associate Vice Chancellor for Business Services, was available for questions. The Committee approved a motion to recommend that the full Board approve the easements.
- D. The Committee reviewed a request to approve Demolition of a Wash Shelter at 285 Easy Street. Scott Buck, Associate Vice Chancellor for Business Services, was available for questions. The Committee approved a motion to recommend that the full Board approve the demolition.
- E. The Committee reviewed a request to approve the Lease of Clinical /Office Space at Moye Medical Building I, 521 Moye Boulevard. Scott Buck, Associate Vice Chancellor for Business Services, was available for questions. The Committee approved a motion to recommend that the full Board approve the lease.
- F. The Committee reviewed a request to approve the Lease of Clinical /Office Space at Moye Medical Building II, 527 Moye Boulevard. Scott Buck, Associate Vice Chancellor for Business Services, was available for questions. The Committee approved a motion to recommend that the full Board approve the lease.
- G. Bill Bagnell, Associate Vice Chancellor for Campus Operations, provided the Capital Projects Update including an update on the master plan and millennial campus.
- H. Bill Koch, Associate Vice Chancellor for Environmental Health and Campus Safety and Interim Chief Jason Sugg gave an update on Campus Safety.
- I. Bill Bagnell, Associate Vice Chancellor for Campus Operations, provided a summary of Designer Selection Approvals since the last BOT meeting.
- J. The Committee reviewed the request to approve FY2015-2016 Annual Human Resources Report. Melissa Bard, Associate Vice Chancellor for Human Resources was available for questions.
- K. Melissa Bard, Associate Vice Chancellor for Human Resources, provided the approved EHRA Employee Salary Adjustment Report.

Meeting adjourned at 3:45pm.

Respectfully Submitted,

Rhonda Jordan, VC Administration & Finance Office

East Carolina University
Board of Trustees
Finance and Facilities Committee
April 27, 2017

Session	Finance and Facilities Committee
Responsible Person	Vice Chancellor for Administration and Finance Frederick Niswander Associate Vice Chancellor for Business Services Scott Buck
Agenda Item	II.A.
Item Description	Request the ECU Board of Trustees Approval to lease the Firetower Clinic for ECUP
Comments	N/A
Action Requested	Committee Approval
Disposition	
Notes	

MEMORANDUM

TO: Rick Niswander

FROM: Scott Buck *Scott*

DATE: March 30, 2017

SUBJECT: Request ECU Board of Trustees Approval to Lease ± 12,832 Square Feet of Clinical/Office Space at 1204 East Fire Tower Road

ECU Physicians (ECUP) requests ECU Board of Trustees approval to lease ±12,832 square feet of clinical/office space at 1204 East Fire Tower Road from MEE Properties.

The lease shall be effective May 1, 2017 for a term of five (5) years with two (2), one (1) year renewal options. The lease rate for year one (1) shall be \$200,133.24 (\$15.60 /SF/YR). Years two (2) thru five (5) shall increase by the CPI not to exceed 3% annually. ECU shall pay for janitorial and utilities.

In accordance with ECUP Delegated Leasing Authority, this lease is deemed strategic in nature as ECUP has been in this location since 1997 and due to the familiarity of the patients to this location. This lease has been prior approved by the ECUP Property Review Committee and the Interim Dean of the Brody School of Medicine.

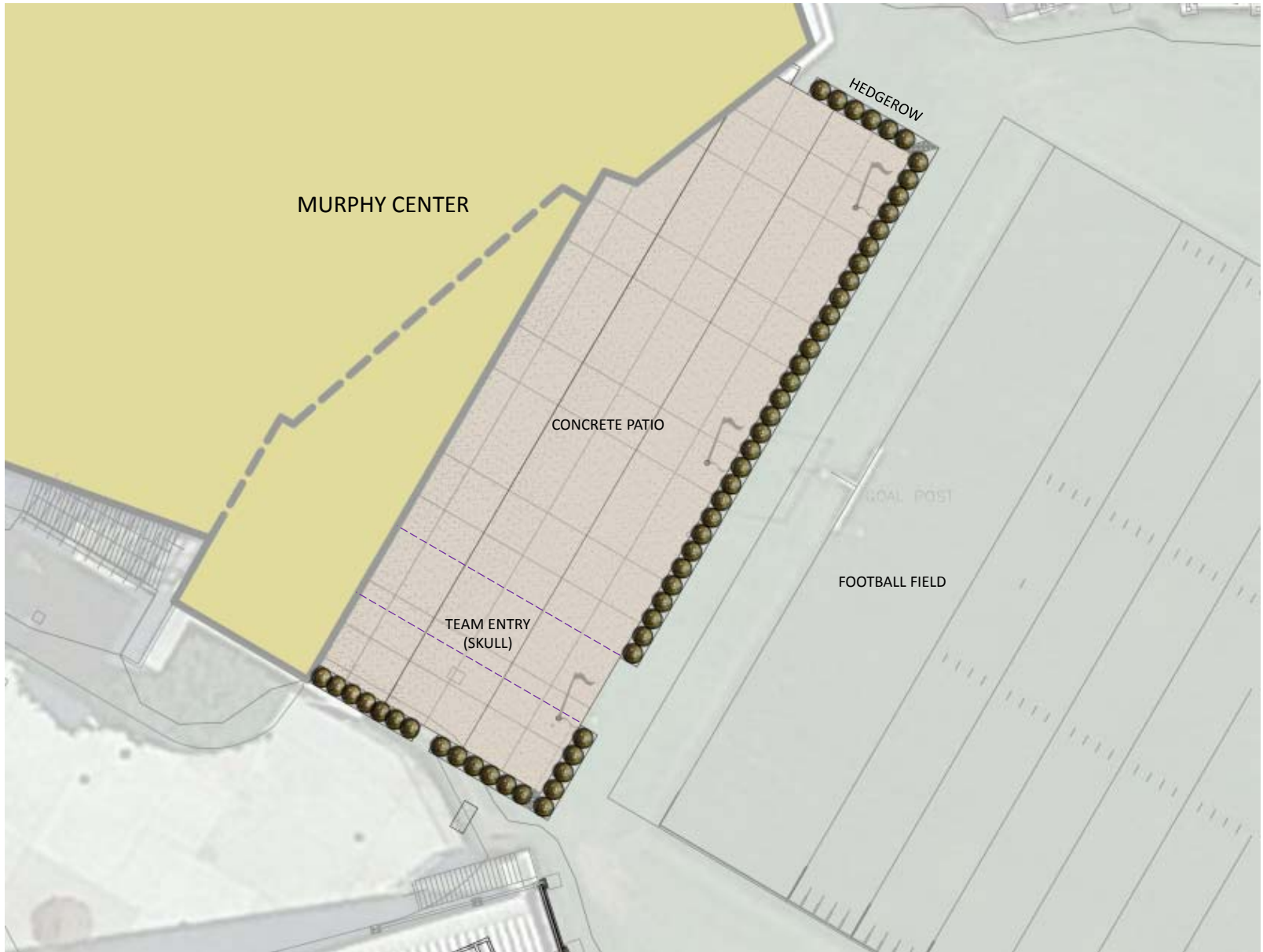
Source of funds shall be MFPP.

East Carolina University
Board of Trustees
Finance and Facilities Committee
April 27, 2017

Session	Finance and Facilities Committee
Responsible Person	Vice Chancellor for Administration and Finance Frederick Niswander Associate Vice Chancellor for Campus Operations Bill Bagnell
Agenda Item	II.B.
Item Description	Request the ECU Board of Trustees Approval on the Dowdy Ficklen Stadium Southside Renovation Elevations
Comments	N/A
Action Requested	Committee Approval
Disposition	
Notes	









East Carolina University
Board of Trustees
Finance and Facilities Committee
April 27, 2017

Session	Finance and Facilities Committee
Responsible Person	Vice Chancellor for Administration and Finance Frederick Niswander Associate Vice Chancellor for Campus Operations Bill Bagnell
Agenda Item	II.C.
Item Description	Request the ECU Board of Trustees Approval on the Greene Residence Hall Renovation Elevations
Comments	N/A
Action Requested	Committee Approval
Disposition	
Notes	



EAST CAROLINA UNIVERSITY
GREENE RESIDENCE HALL RENOVATION



EAST CAROLINA UNIVERSITY
GREENE RESIDENCE HALL RENOVATION



EAST CAROLINA UNIVERSITY
GREENE RESIDENCE HALL RENOVATION



Preliminary Design

April 27, 2017

Page: 03

GREENE RESIDENCE HALL - SOUTH/EAST ELEVATION



SOUTH/WEST ELEVATION



NORTH/WEST ELEVATION



SOUTH ELEVATION



EAST CAROLINA UNIVERSITY GREENE RESIDENCE HALL RENOVATION



NORTH/EAST ELEVATION



EAST CAROLINA UNIVERSITY
GREENE RESIDENCE HALL RENOVATION

GREENE RESIDENCE HALL - SOUTH ELEVATION



EAST CAROLINA UNIVERSITY
GREENE RESIDENCE HALL RENOVATION

East Carolina University
Board of Trustees
Finance and Facilities Committee
April 27, 2017

Session	Finance and Facilities Committee
Responsible Person	Vice Chancellor for Administration and Finance Frederick Niswander Associate Vice Chancellor Environmental Health and Campus Safety Bill Koch
Agenda Item	II.D.
Item Description	Campus Safety Update
Comments	N/A
Action Requested	Information
Disposition	

East Carolina University
Board of Trustees
Finance and Facilities Committee
April 27, 2017

Session	Finance and Facilities Committee
Responsible Person	Vice Chancellor for Administration and Finance Frederick Niswander Associate Vice Chancellor for Campus Operations Bill Bagnell
Agenda Item	II.E.
Item Description	Capital Projects Update
Comments	N/A
Action Requested	Information
Disposition	
Notes	

East Carolina University
Board of Trustees
Finance and Facilities Committee
April 27, 2017

Session	Finance and Facilities Committee
Responsible Person	Vice Chancellor for Administration and Finance Frederick Niswander Associate Vice Chancellor for Campus Operations Bill Bagnell
Agenda Item	II.F.
Item Description	Designer Selection Recommendations Approval Summary
Comments	N/A
Action Requested	Information
Disposition	
Notes	



MEMORANDUM

TO: Dr. Rick Niswander, Vice Chancellor
Administration and Finance

Approved: *R. Niswander*
Date: 4/13/17

252-328-6858 office
252-328-4259 fax

FROM: John G. Fields, PE *John Fields*
Director

DATE: March 29, 2017

SUBJ: Designer Selection Recommendation
Fletcher Make Up Air
Code: 41636 Item: 305

On March, 28 2017, the designer pre-selection committee for the above referenced project conducted interviews with four firms who were shortlisted based on a qualifications based selection criteria as required by the State Building Commission.

The committee consisted of Bill Chatfield, Robert Still and LL Everett of Facilities Engineering & Architectural Services and Ray Schmit and Paul Carlson of Main Campus Facilities Services and Robert Trotta with Housing.

Based on the interviews and requirements of this project the committee recommends the following firms in prioritized order with Sigma Engineered Solutions being the top recommended firm.

Sigma Engineered Solutions	Morrisville, NC
RDK Engineers	Durham, NC
Progressive Design	Raleigh, NC
Elm Engineering	Charlotte, NC

To the best of our knowledge and belief all steps in the selection process were conducted in accordance with State Building Commission requirements as they apply to the institutions of the University of North Carolina.

Approval of the recommended firm, Sigma Engineered Solutions, is requested.

If you have any questions or need additional information, please do not hesitate to call.

JGF/le

Enclosure: Designer Advertisement Memo

cc: William Bagnell
Pre-selection Committee Members



East Carolina University


Tomorrow starts here.

Facilities Engineering
and Architectural Services
Campus Operations
1001 East Fourth Street
East Carolina University
Greenville, NC 27858-4353

252-328-6858 office
252-328-4259 fax

MEMORANDUM

TO: Interested Designers

FROM: John G. Fields, PE 

DATE: January 23, 2017

SUBJECT: Makeup Air System for Fletcher Residence Hall

East Carolina University is seeking the services of a qualified firm for design, bidding and construction coordination for design of a makeup air system in Fletcher Residence Hall. This project requires engineering design capabilities for building HVAC systems.

Fletcher Residence Hall has exhaust air systems for restrooms and showers, but no makeup air supply. It was constructed in 1965, has 8 stories, 95,000 total gross square feet and houses 434 students.

The selected firm will review the existing building in consideration of development of design to produce bid documents, conduct bidding services and construction coordination through closeout.

Interested firms should submit six (6) copies of their current SF330, a portfolio of relevant work and a letter of interest. To be considered for this project, ensure that your submission is received at the following address before 5:00 p.m. on February 16, 2017:

Bill Chatfield, PE, LEED AP
East Carolina University
Facilities Engineering & Architectural Services
1001 E. Fourth St.
Greenville, North Carolina 27858

In accordance with our qualifications-based selection system, designers are expected to make no contact with our University staff, faculty or trustees at this stage of the selection process. All questions should be directed to the attention of this office. East Carolina University encourages participation by MWBE firms and supports UNC system's policy of ensuring and promoting opportunities for Historically Underutilized Businesses.

Thank you for your interest in East Carolina University.



East Carolina University

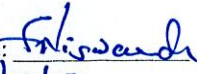
Tomorrow starts here.


Facilities Engineering
and Architectural Services
Campus Operations
1001 East Fourth Street
East Carolina University
Greenville, NC 27858-4353

252-328-6858 office
252-328-4259 fax

MEMORANDUM

TO: Dr. Rick Niswander, Vice Chancellor
Administration and Finance

Approved: 
Date: 4/13/17

FROM: John G. Fields, PE 
Director

DATE: April 6, 2017

SUBJ: Designer Selection Recommendation
Brody Auditorium Renovation
Code: 41636 Item: 304 SCO ID: 16562

On April 6, 2017, the designer pre-selection committee for the above referenced project conducted interviews with four (4) firms who were shortlisted based on a qualifications based selection criteria as required by the State Building Commission.

The committee consisted of Kelly Lancaster (Program Manager, HSH BSOM Academic Affairs), Dr. Elizabeth Baxley (Brody School of Medicine-Associate Dean of Academic Affairs), John Fields, PE (Director-Facilities Engineering & Architectural Services), Griffin Avin (Director-HSC Facility Services), Michael Talton and Eugene Tashiro (Project Managers -Facility Engineering & Architectural Services).

Based on the interviews and requirements of this project the committee recommends the following firms in prioritized order with Szostak Design being the top recommended firm.

Szostak Design	Chapel Hill, NC
Kirwan Architecture	Raleigh NC
Davis Kane Architects, PA	Raleigh, NC
BHDP PLLC	Raleigh, NC

To the best of our knowledge and belief all steps in the selection process were conducted in accordance with State Building Commission requirements as they apply to the institutions of the University of North Carolina.

Approval of the recommended firm, Szostak Design, is requested.

If you have any questions or need additional information, please do not hesitate to call.

Enclosure: Interested Designer Memo
cc: William Bagnell
Pre-selection Committee Members



East Carolina University


Tomorrow starts here.

Facilities Engineering
and Architectural Services
Campus Operations
1001 East Fourth Street
East Carolina University
Greenville, NC 27858-4353

252-328-6858 office
252-328-4259 fax

MEMORANDUM

TO: Interested Designers

FROM: John G. Fields, PE 
Director

DATE: January 12, 2017

SUBJECT: Brody School of Medicine
Brody Auditorium Renovation

East Carolina University is seeking the services of a qualified design firm to provide advance planning services for renovation of the Brody Auditorium located in the Brody School of Medicine. The initial design work for the project is to study and provide alternatives with cost estimates for complete modernization of the auditorium. The goals for the project include increasing seating capacity; complete renovation of the stage and theatre equipment; complete renovation of the audio-visual systems; renovation of the existing interior finishes; new fire protection and fire alarm systems; HVAC and electrical, upgrades; full ADA accessibility; and meet all NC Building Code requirements.

The selected firm may be retained for design and construction services for the project at the University's sole discretion.

Interested firms should submit six (6) copies of your letter of a current SF330, a portfolio of relevant work and a letter of interest to the project manager, Eugene Tashiro, AIA, at the address below by February 3, 2017. Succinct proposals that convey the breadth of the team's qualifications will be very much appreciated and considered in the review process.

Eugene Tashiro, AIA
East Carolina University
Facilities Engineering & Architectural Services
1001 E. Fourth St.
Greenville, North Carolina 27858

In accordance with our qualifications-based selection system, designers are expected to make no contact with our University staff, faculty or trustees at this stage of the selection process. All questions should be directed to the attention of this office, attention Eugene Tashiro, AIA. The use of email is highly recommended. East Carolina University encourages participation by MWBE firms and supports UNC system's policy of ensuring and promoting opportunities for Historically Underutilized Businesses.

Thanks for your interest in East Carolina University.

East Carolina University
Board of Trustees
Finance and Facilities Committee
April 27, 2017

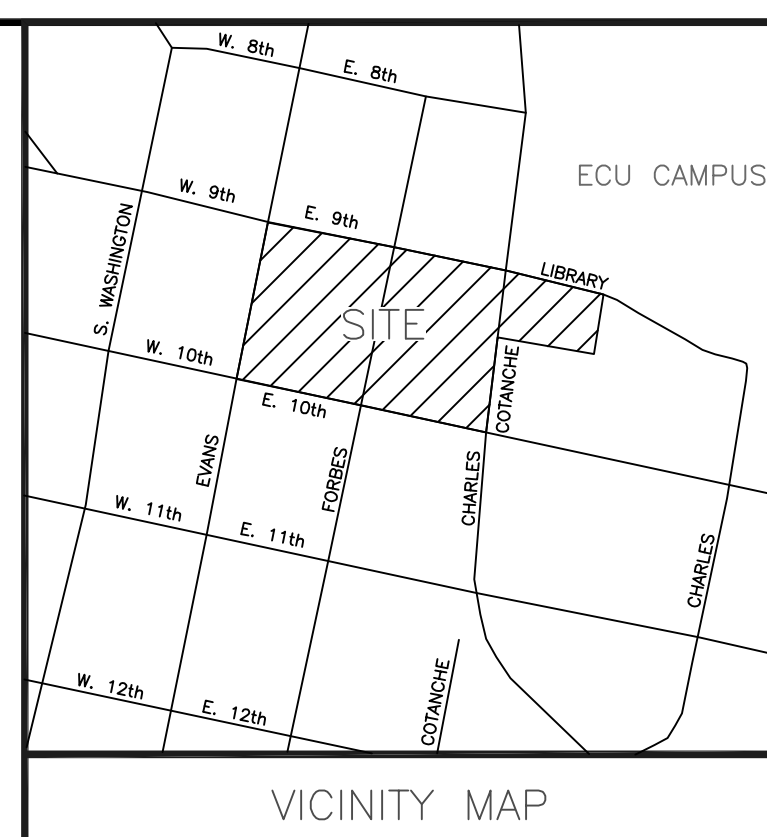
Session	Finance and Facilities Committee
Responsible Person	Vice Chancellor for Administration and Finance Frederick Niswander Associate Vice Chancellor for Campus Operations Bill Bagnell
Agenda Item	II.G.
Item Description	Life Sciences and Biotechnology Building Update
Comments	N/A
Action Requested	Information
Disposition	
Notes	

CONTROL POINT	ELEVATION	COORDINATES	POINT DESCRIPTION
CP 1	45.41	N=679,784.52 E=2,483,311.99	R/W MONUMENT W/ CAP
CP 2	47.63	N=679,274.31 E=2,483,271.26	PK NAIL
CP 3	50.12	N=679,414.07 E=2,483,498.85	MAG NAIL
CP 4	53.84	N=679,407.78 E=2,483,928.22	MAG NAIL
CP 5	54.78	N=679,724.49 E=2,483,928.22	10" NAIL SPIKE
CP 6	45.22	N=679,792.54 E=2,483,594.87	MAG NAIL

ALL ELEVATIONS BASED ON NAVD 1988

LEGEND

- ABS = ACRYLONITRILE-BUTADIENE-STYRENE
- AF = AERATION FOUNTAIN
- AG = ACCESS GRATE
- AL = AREA LIGHT
- BS = BOTTOM OF SLOPE
- B/V/B = BACK OF CURB TO BACK OF CURB
- BB = BOTTOM OF DITCH BANK
- BC = BACK OF CURB
- BD = BOLLARD
- BLD = BASE FLOOD ELEVATION
- BLD = BUILDING CORNER
- BM = BENCH MARK
- BO = BLOW OFF
- CAIV = CABLE TELEVISION BOX
- CD = CONDUIT
- CLD = CENTERLINE DITCH
- CLF = CHAIN LINK FENCE
- CLP = CENTERLINE PATH
- CLR = CENTERLINE ROAD
- CLS = CENTERLINE SWALE
- CM = CONCRETE MANHOLE
- CMP = CORRUGATED METAL PIPE
- CO = CLEAN OUT
- CP = CONTROL POINT (PK NAIL)
- CPR = CORRUGATED PLASTIC PIPE
- CW/MH = CONCRETE FRISBEE GOLF TEE BOX
- CW/MH = COLD WATER MANHOLE
- DIP = DUCTILE IRON PIPE
- DW = DRIVEWAY
- E = EASING COORDINATE
- EB = ELECTRICAL BOX
- EC = EDGE OF CONCRETE
- EIP = EXISTING IRON PIPE
- ES = EXISTING IRON STAKE
- ELM = ELECTRIC METER BOX
- EMH = ELECTRIC MANHOLE
- EP = EDGE OF PAVEMENT
- EPKN = EXISTING PARKER-KALON NAIL
- ERIS = EXISTING RAILROAD SPIKE
- ESCP = EXTRA STRENGTH CONCRETE PIPE
- R/W = RIGHT-OF-WAY
- FES = FIRE DEPARTMENT CONNECTION
- FES = FLARED END SECTION
- FTE = FINISHED FLOOR ELEVATION
- FW = FIRE HYDRANT
- FIR = FLOOD INSURANCE RATE MAP
- FL = FLOW LINE
- FM = FORCE MAIN
- FO = FIBER OPTIC
- FOM = FIBER OPTIC MARKER
- FOW = FIBER OPTIC VAULT
- FP = FLAG POLE
- GM = GAS METER
- GV = GAS VALVE
- GW = GUY WIRE
- HB = HOT BOX
- HW = HARDWOOD TREE
- IB = ICE BOX
- ICV = IRRIGATION CONTROL VALVE
- INV = INVERT
- JB = JUNCTION BOX
- LF = LIGHT POLE
- LSA = LANDSCAPED AREA
- MB = MAIL BOX
- MBL = MINIMUM BUILDING LINE
- MC = METAL CONTAINER
- MH = MANHOLE
- MHW = MEAN HIGH WATER
- MP = METAL PIPE
- MW = MONITORING WELL
- N = NORTHING COORDINATE
- NTS = NOT TO SCALE
- POB = POND BOTTOM
- PH = PLUMP HOUSE
- PP = POWER POLE
- PC = POINT OF CURVATURE
- PCC = POINT OF CONCAVE CURVATURE
- PRC = POINT OF REVERSE CURVATURE
- PT = POINT OF TANGENCY
- PVC = POLYVINYL CHLORIDE
- RCP = REINFORCED CONCRETE PIPE
- R/W = RIGHT-OF-WAY
- SC = SECURITY CAMERA
- SDMH = STORM DRAINAGE MANHOLE
- SP = SET IRON PIPE
- SMA = SET MAG NAIL
- SRS/SV = SET RAILROAD SPIKE
- SS = SEWER SERVICE
- SMH = STAM MANHOLE
- SSMH = SANITARY SEWER MANHOLE
- STMH = STORM SEWER MANHOLE
- SW = SIDEWALK
- TB = TOP OF BANK (TOPO ONLY)
- TC = TOP OF CONCRETE
- TG = TOP OF GRAVEL
- TLMH = TELEPHONE MH
- TP = TOP OF PAVEMENT
- TEP = TELEPHONE PEDESTAL
- TRMS = ELECTRICAL TRANSFORMER
- TS = TOP OF FLOOD SLOPE
- TSP = TRAFFIC SIGNAL BOX
- UTP = UTILITY POLE
- VG = VALLEY GUTTER
- WM = WATER METER BOX
- WP = WETLAND POINT
- WSE = WATER SURFACE ELEVATION
- WV = WATER VALVE
- YL = YARD LIGHT
- NY = NOT TO SCALE
- UE = UNDERGROUND ELECTRICAL LINE
- UL = UNDERGROUND COMMUNICATIONS LINE
- W = WATERLINE
- WS = SANITARY SEWER LINE
- WFS = SANITARY SEWER FORCE MAIN
- FOC = GAS LINE
- FOC = FIBER OPTIC LINE
- OP = OVERHEAD POWER LINE
- X = FENCE LINE
- C = UNDERGROUND CABLE



SCIENCE BLDG

PARKING DECK

FUTURE BLDG

(6) 6" CONDUIT CONCRETE ENCASED DUCTBANK WITH (2) SETS OF 500KCMIL TO EXTEND LOOP TO NEW SWITCH

NEW ELECTRICAL MANHOLE (TYP OF 3)

(6) 6" CONDUIT CONCRETE ENCASED DUCTBANK WITH (2) SETS OF 500KCMIL CONDUCTORS TO EXTEND LOOP

EXISTING ELECTRICAL MANHOLE

24" CHS/R

EXISTING ELECTRICAL MANHOLE

EXISTING MV CIRCUIT FROM POD

EXISTING ELECTRICAL MANHOLE

- (1) CLASS OF SURVEY: "CLASS C"
- (2) POSITIONAL ACCURACY: 0.006'
- (3) TYPE OF FIELD GPS SURVEY PROCEDURE: STATIC
- (4) DATE OF SURVEY: NOVEMBER 11, 2016
- (5) DATUM/EPOCH: NAD 83-2011
- (6) PUBLISHED/FIXED-CONTROL USE: NCGS CHARLES
- (7) GEOID MODEL: GEOID 12B
- (8) COMBINED GRID FACTOR: 0.99988995
- (9) UNITS: U.S. SURVEY FEET

SURVEYOR'S CERTIFICATION

I, MICHAEL WEST BALDWIN, CERTIFY THAT THE BOUNDARY SURVEY, TOPOGRAPHICAL SURVEY, AND HORIZONTAL AND VERTICAL CONTROL SHOWN HEREON WERE COMPLETED UNDER MY DIRECT AND RESPONSIBLE CHARGE FROM AN ACTUAL GROUND SURVEY MADE UNDER MY SUPERVISION (DEED DESCRIPTION RECORDED IN (SEE REFERENCES) OR FROM INFORMATION FOUND IN MAP BOOK PAGE OR AS REFERENCED HEREON; THAT THE BOUNDARIES NOT SURVEYED ARE CLEARLY INDICATED AS DRAWN FROM INFORMATION FOUND IN BOOK PAGE OR AS REFERENCED HEREON; THAT THE RATIO OF PRECISION AS CALCULATED IS 1:1000; THAT ALL INTERIOR LOT LINES SHOWN ARE PROPOSED AND SHALL NOT BE USED FOR THE CONVEYANCE OF PROPERTY; THAT THE TOPOGRAPHIC SURVEY WAS PERFORMED TO MEET FEDERAL GEOGRAPHIC DATA COMMITTEE STANDARDS AS APPLICABLE; THAT THE TOPOGRAPHIC DATA WAS OBTAINED ON THAT THE SURVEY WAS COMPLETED ON THE CONTOURS OF THE SURVEY; THAT VERTICAL CONTROL SHOWN AS BROKEN LINES MAY NOT MEET THE STATED STANDARD; THAT VERTICAL CONTROL WAS ESTABLISHED AT THE SITE TO THE CLASS "A" STANDARD; AND THAT THIS MAP MEETS THE REQUIREMENTS OF THE "STANDARDS OF PRACTICE FOR LAND SURVEYING IN NORTH CAROLINA" (21 NCAC 56.1600).

WITNESS MY ORIGINAL SIGNATURE AND SEAL THIS _____ DAY OF _____, 2017.

THIS DRAWING IS MODIFIED BY LORD AECK SARGENT, FROM ITS ORIGINAL CONTENT TO BE A SYNTHETIC BACKGROUND FOR A LIFE CYCLE COST ANALYSIS FOR THE PURPOSE OF STUDYING UTILITY PROVISIONS FOR ECU'S LIFE SCIENCE AND BIOTECHNOLOGY PROJECT.

GENERAL NOTES

1. ALL AREAS CALCULATED BY COORDINATE GEOMETRY.
2. THIS IS A SURVEY OF EXISTING PARCELS OF LAND.
3. VERTICAL DATUM REFERENCED TO NAVD 1988.
4. THIS PROPERTY IS NOT LOCATED IN A SPECIAL FLOOD AREA AS DETERMINED BY THE FEDERAL EMERGENCY MANAGEMENT AGENCY, REFERENCE PITT COUNTY FIRM 5720468700K, DATED JULY 7, 2014.
5. EXISTING TREE SYMBOL DOES NOT REPRESENT TRUE DIAMETER OF LIMB CANOPY.
6. ALL TREE TRUNK DIAMETERS ARE TAKEN AT BREAST HEIGHT.
7. ALL DISTANCES SHOWN ARE HORIZONTAL FIELD MEASUREMENTS. NO GRID FACTORS HAVE BEEN APPLIED UNLESS OTHERWISE NOTED.

LOCATION AND TOPOGRAPHIC SURVEY FOR

STATE OF NORTH CAROLINA - EAST CAROLINA UNIVERSITY

GREENVILLE, GREENVILLE TOWNSHIP, PITT COUNTY, N.C.

OWNER: STATE OF NORTH CAROLINA
ADDRESS: 1321 MAIL SERVICE CENTER
RALEIGH, NC 27699
PHONE: 919-907-4850

Baldwin Design Consultants, PA
ENGINEERING - SURVEYING - PLANNING
100 EAST MONTGOMERY AVENUE, SUITE 200
RALEIGH, NC 27601

SURVEYED: JP
APPROVED: MWB
DRAWN: JGG
DATE: 1/25/17
CHECKED: MWB
SCALE: 1" = 30'

SITE OPTION 2

4 FLOORS @ 32,000 GSF +
PENTHOUSE

+/- 142,000 GSF

Pros:

Offers the best opportunity to create the gateway façade and view to and from the west.

Parking structure slightly closer to main campus.

Better loading and receiving location.

Offers more pedestrian porosity through the site.

Cons:

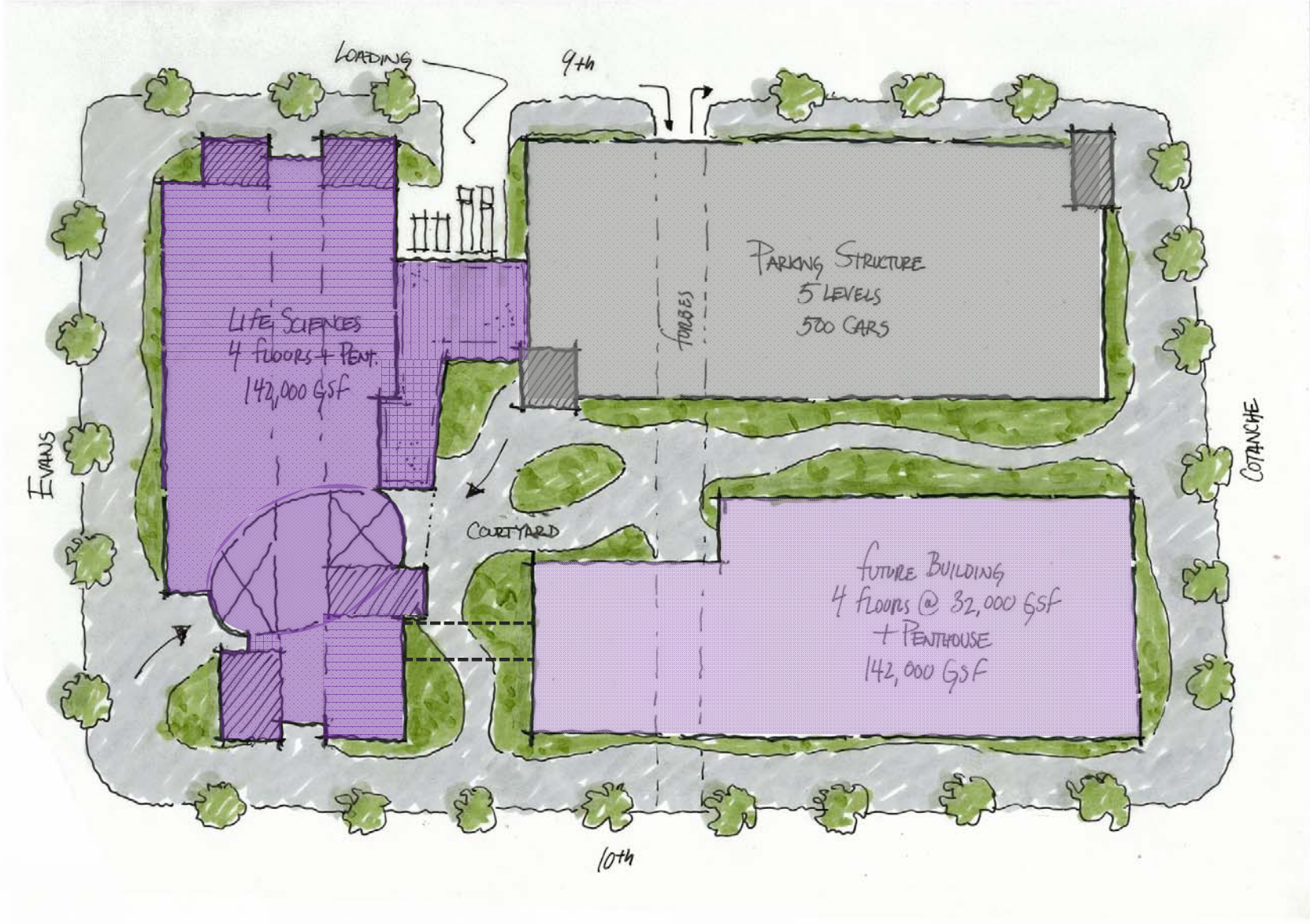
Maximizes western exposure.



SITE OPTION 2

4 FLOORS @ 32,000 GSF +
PENTHOUSE

+/- 142,000 GSF



SITE OPTION 2

4 FLOORS @ 32,000 GSF +
PENTHOUSE

+/- 142,000 GSF



East Carolina University
Board of Trustees
Finance and Facilities Committee
April 27, 2017

Session	Finance and Facilities Committee
Responsible Person	Vice Chancellor for Administration and Finance Frederick Niswander Associate Vice Chancellor for Human Resources Melissa Bard
Agenda Item	II.H.
Item Description	Annual Report on Related Persons
Comments	N/A
Action Requested	Information
Disposition	
Notes	

East Carolina University
Board of Trustees
Finance and Facilities Committee
April 27, 2017

Session	Finance and Facilities Committee
Responsible Person	Vice Chancellor for Administration and Finance Frederick Niswander Associate Vice Chancellor for Human Resources Melissa Bard
Agenda Item	II.I.
Item Description	Salary Increase Report
Comments	N/A
Action Requested	Information
Disposition	
Notes	

MEMORANDUM

TO: ECU Board of Trustees

FROM: Melissa L. Bard *Melissa L. Bard by KHW*
Associate Vice Chancellor for Human Resources
Chief Human Resources Officer

DATE: March 21, 2017

RE: Report of Approved EHRA Employee Salary Adjustments
Pursuant to 9/30/16 Expanded Authority (January 1, 2017 –
February 28, 2017)

The attached informational report is provided to you in accordance with the *Resolution to Delegate Expanded Authority to the Chancellor of East Carolina University for Certain Salary Actions for Employees Exempt from the State Human Resources Act*, as approved by the Board of Trustees on September 30, 2016. Please note that the attached spreadsheet contains confidential personnel information in accordance with N.C. GEN. STAT. §126-22, *et seq.*

Attachment

cc: Dr. Cecil Staton
Chancellor

Dr. Ronald L. Mitchelson
Provost & Senior Vice Chancellor for Academic Affairs

Dr. Virginia Hardy
Vice Chancellor for Student Affairs

Dr. Rick Niswander
Vice Chancellor for Administration & Finance

East Carolina University
Board of Trustees
Finance and Facilities Committee
April 27, 2017

Session	Finance and Facilities Committee
Responsible Person	Vice Chancellor for Administration and Finance Frederick Niswander
Agenda Item	II.J.
Item Description	Other
Comments	N/A
Action Requested	Information
Disposition	
Notes	